

Network Waitaki is an electricity distribution company in the heart of the South Island. We take the electricity from Transpower’s national grid and distribute it around our network to power your homes, businesses and the wider community. We are proud to deliver a safe, reliable and sustainable electricity supply to 13,500 customer connections across a network of more than 2,000km, reaching as far south as Shag Point, up into the Hakataramea Valley, and west to the top of Lake Ōhau.

Network Waitaki is a 100% consumer Trust-owned company, owned by the Waitaki Power Trust for the benefit of our customers.

MEETING OUR CUSTOMERS FUTURE ENERGY NEEDS

Network Waitaki is committed to delivering safe, reliable energy to your home and business. We do this through the maintenance and upgrade of transformers, switchgear, and sub-transmission lines.

On average, the distribution component for those connected to our network will increase 19%. The distribution component makes up 27% of a typical electricity bill. These increases are necessary to replace ageing infrastructure and to future-proof our network. The increases in the distribution and transmission charges equate to approximately \$20 per month for an average residential household.

As our region grows, so does the demand on our network. We’re investing \$166m over the next decade so we can continue to provide the dependable service our customers expect and support our region’s growth for the next 30-50 years.

You can learn more about our network investment plans including the new Grid Exit Point (GXP) on our website www.networkwaitaki.co.nz/company/future or pick up a brochure from our reception.

OUR PROJECTS



COMPLETE

Te Awamako Substation

In mid-2024 we completed the build of the Te Awamako zone substation, and the installation of 12 km of new 110 kVA line. This was a major project to enhance capacity and security of supply at Ōtematata, as well as on the Waitaki Plains.

5 km of new line from Waitaki to Kurow was also installed to provide greater network resilience for customers in that area of our network.



IN PROGRESS

Ōtematata’s new transformer

A new 3MVA 33/11kV transformer has been craned onto a new foundation at Ōtematata substation. This is a key milestone in a project that will increase the security of supply at Ōtematata by installing two brand new supply transformers and reconfigure the 11kV circuits.

The second transformer will be installed in the coming months and together they will replace the single 55 year old transformer that is currently in service.



ON THE WAY

North Otago GXP and Sub-Transmission Lines

We are building the new North Otago GXP which will receive energy from Transpower’s national grid. We will then take the electricity and distribute it around our network. We aim to have this commissioned in the first half of 2027. The GXP will provide additional capacity and security of supply for our customers and support future growth in the region.

While we’re at it we’re also upgrading our sub-transmission network to carry electricity from the new GXP to Ōamaru. The work will be carried out in future years and will help us move power more efficiently around our region, supporting future growth.

COMMITTED TO HELPING OUR CUSTOMERS



The Network Waitaki team enjoyed hosting Powerswitch and EnergyMate at the North Otago A&P Show last weekend. They were there to help customers learn how they can save money on their power bill.

The **Powerswitch** team, a free and independent service from Consumer NZ, helped customers double check their power bills to see how much they could save by comparing electricity plans. You can use their free service any time on their website – visit www.powerswitch.org.nz

Also the **EnergyMate** local in home coaches were on hand to share tips on how you can make your home more energy efficient and lower your power bill. EnergyMate’s coaches will come to your home and check to see if you’re on the right power plan, offer advice on heating your home and using appliances efficiently, and check your hot water and shower flow. For more information check out the EnergyMate website www.energymate.nz

HAVE A QUESTION? GET IN TOUCH



0800 440 220



www.networkwaitaki.co.nz



service@networkwaitaki.co.nz



@networkwaitaki

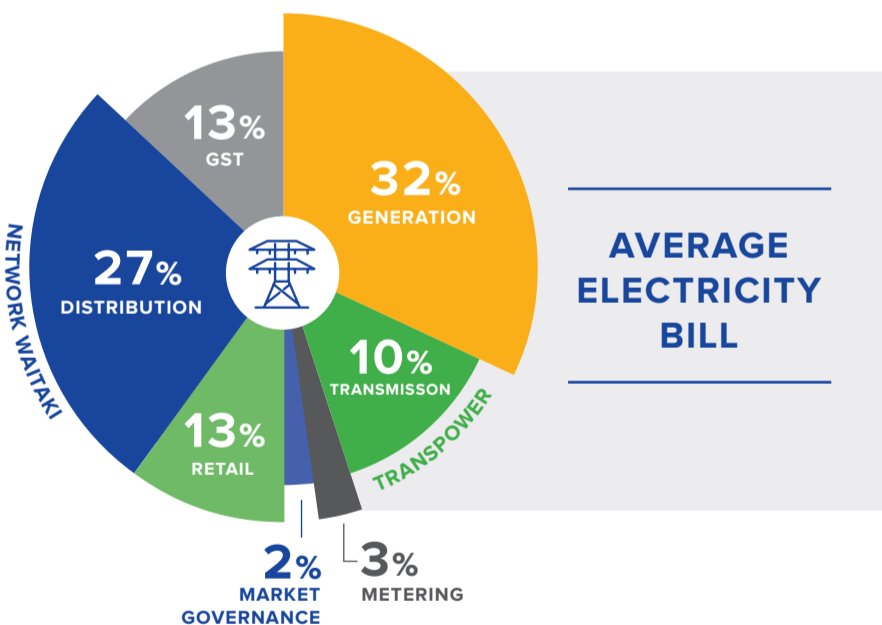
DELIVERY PRICE SCHEDULE FOR NETWORK WAITAKI

EFFECTIVE FROM 1 APRIL 2025

The prices in this schedule are used to charge electricity retailers for the delivery of electricity in the Waitaki region serviced by Network Waitaki. Electricity retailers determine how to allocate this cost together with energy, metering and other retail costs when setting the retail prices that appear on an end consumer's power account.

Code	Description	Units	Effective 1 April 2024			Effective 1 April 2025			No. of Consumers
			Distribution	Pass-through	Delivery price	Distribution	Pass-through	Delivery price	
RESIDENTIAL LOW FIXED CHARGE CONNECTIONS / Price category code: RL (0 - 15 kVA)									
RLU	0 - 15kVA - Uncontrolled	\$/connection/day	0.4624	0.1376	0.6000	0.5849	0.1651	0.7500	965
RLC	0 - 15kVA - Controlled	\$/connection/day	0.4624	0.1376	0.6000	0.5849	0.1651	0.7500	4,506
RLUD	Day Volume - Uncontrolled	\$/kWh	0.12453	0.03426	0.15879	0.14391	0.03848	0.18239	
RLCD	Day Volume - Controlled	\$/kWh	0.11178	0.02207	0.13385	0.13378	0.02881	0.16259	
RLUN	Night Volume - Uncontrolled	\$/kWh	0.01257	0.01231	0.02488	0.01247	0.01025	0.02272	
RLCN	Night Volume - Controlled	\$/kWh	0.01128	0.00227	0.01355	0.01247	0.00270	0.01517	
GENERAL CONNECTIONS / Price category code: GC									
15U	0 - 15kVA - Uncontrolled	\$/connection/day	2.5142	0.7721	3.2863	2.9294	0.8677	3.7971	1,945
15C	0 - 15kVA - Controlled	\$/connection/day	2.2554	0.4706	2.7260	2.7369	0.6289	3.3658	4,025
30U	16-30kVA Uncontrolled	\$/connection/day	3.9716	1.3602	5.3318	4.7075	1.5965	6.3040	465
30C	16 - 30kVA - Controlled	\$/connection/day	3.6009	0.9483	4.5492	4.4270	1.2469	5.6739	192
50U	31-50kVA Uncontrolled	\$/connection/day	6.4040	1.6507	8.0547	7.6948	1.9645	9.6593	600
50C	31-50kVA Controlled	\$/connection/day	5.9100	1.1607	7.0707	7.3380	1.5306	8.8686	150
100	51-100kVA	\$/connection/day	14.0926	2.2999	16.3925	16.7692	2.8853	19.6545	373
200	101-200kVA	\$/connection/day	28.1756	4.5697	32.7453	33.5269	5.7327	39.2596	135
300	201-300kVA	\$/connection/day	42.1968	6.9620	49.1588	50.2112	8.7340	58.9452	56
500	301-500kVA	\$/connection/day	70.7097	12.5452	83.2549	84.1395	15.7382	99.8777	27
750	501-750kVA	\$/connection/day	107.8642	18.7126	126.5768	128.3506	23.4753	151.8259	13
WATAD	Day volume	\$/kWh	0.02322	0.00584	0.02906	0.02769	0.00584	0.03353	
WATAN	Night volume	\$/kWh	0.00259	0.00064	0.00323	0.00309	0.00064	0.00373	
DGD	Distributed Generation export (Day volume)	\$/kWh	0.00000	0.00000	0.00000	0.00000	0.00000	0.00000	
DGN	Distributed Generation export (Night volume)	\$/kWh	0.00000	0.00000	0.00000	0.00000	0.00000	0.00000	
LARGE COMMERCIAL / Price category code: LC (750 kVA +)									
LC	Daily fixed price	\$/connection/day	2.6238	0.0000	2.6238	5.6160	0.0000	5.6160	1
LCCAP	Daily capacity price	\$/kVA/day	0.1675	0.1018	0.2693	0.1917	0.1030	0.2947	
LCDEM	Daily demand price	\$/kW/day	0.0751	0.0510	0.1261	0.0630	0.0153	0.0783	
INDIVIDUALLY ASSESSED / Price category code: IND									
IND	Individually Priced								12

Note: All prices are exclusive of GST.



WE ARE HERE TO HELP:

For queries about your connection or line charges, email us on service@networkwaitaki.co.nz with the subject line "Connection" or "Pricing" and we'll come back to you.

If you're unsure how these changes might affect your bill, reach out to your retailer. They can break down how our pricing fits into your charges, discuss payment options, and let you know about any available support or discounts.

VISIT OUR WEBSITE FOR:

- Pricing information
- Frequently asked questions

If we can't resolve a concern, you can contact Utilities Disputes Limited – a free and independent resolution service. Visit www.udl.co.nz for more information.

NOTES:

The prices in this schedule are used to charge electricity retailers for the delivery of electricity in the Waitaki region serviced by Network Waitaki. Electricity retailers determine how to allocate this cost together with energy, metering and other retail costs when setting the retail prices that appear on an end consumer's power account.

1. All Charges are GST exclusive. GST is payable in addition to the charges.

2. The price movement amounts to an average overall 19.3% increase mainly as a result of increased operational and capital expenditure. This increase is necessary to allow Network Waitaki to operate efficiently and target a secure and reliable supply of electricity through appropriate levels of investment.

More information on how prices are determined is published in our pricing methodology which is available on the Network Waitaki website (www.networkwaitaki.co.nz).

Different rates are applied for "day volume" (07:00 a.m. until 11:00 p.m.) and for "night volume" (11:00 p.m. until 07:00 a.m. the next morning).

3. Eligibility for the "Residential Low Fixed Charge" price category requires that the premises must be the consumer's principal place of residence as defined by the Electricity Industry Act 2010.

4. Volume (kWh) prices are based on volumes metered at the Grid Exit Points supplying the network. All metered loads should be grossed up using the appropriate loss factor to arrive at the chargeable GXP volume.

5. Large Commercial (LC) load group with connections higher than 750kVA: Daily capacity prices are based on contracted capacity. Daily demand prices are applied to an assessed demand level that is available on request. Capacity and demand prices accrue on a daily basis at the rate of 1/365th of the annual amount due, or 1/366th during a financial year that includes a leap day.

6. Distribution and Pass-through prices are charged in respect of each site and electricity retailers are invoiced monthly in arrears. Fixed prices accrue on a daily basis at the rate of 1/365th of the annual amount due, or 1/366th during a financial year that includes a leap day.

7. Pass-through prices consist of transmission prices, rates and regulatory levies.

8. Where an ICP is disconnected for seasonality reasons and reconnected in the same 12 month period, Network Waitaki reserves the right to charge the fixed charges that would have been due over the period of disconnection had the consumer not seasonally disconnected.

9. Network Waitaki pays an annual discount to consumers. Discounts will be payable based on the number of days the installation has been connected within a specific load group. The discount methodology is available on the Network Waitaki website.

10. Distributed Generation (DG) export prices apply to the volume of energy (kWh) exported from a connection point into Network Waitaki's network for delivery to other network connections. Network Waitaki presently prices exported volume at 0 c/kWh. The installation of small scale generation requires a meter capable of recording both imported and exported volume data.